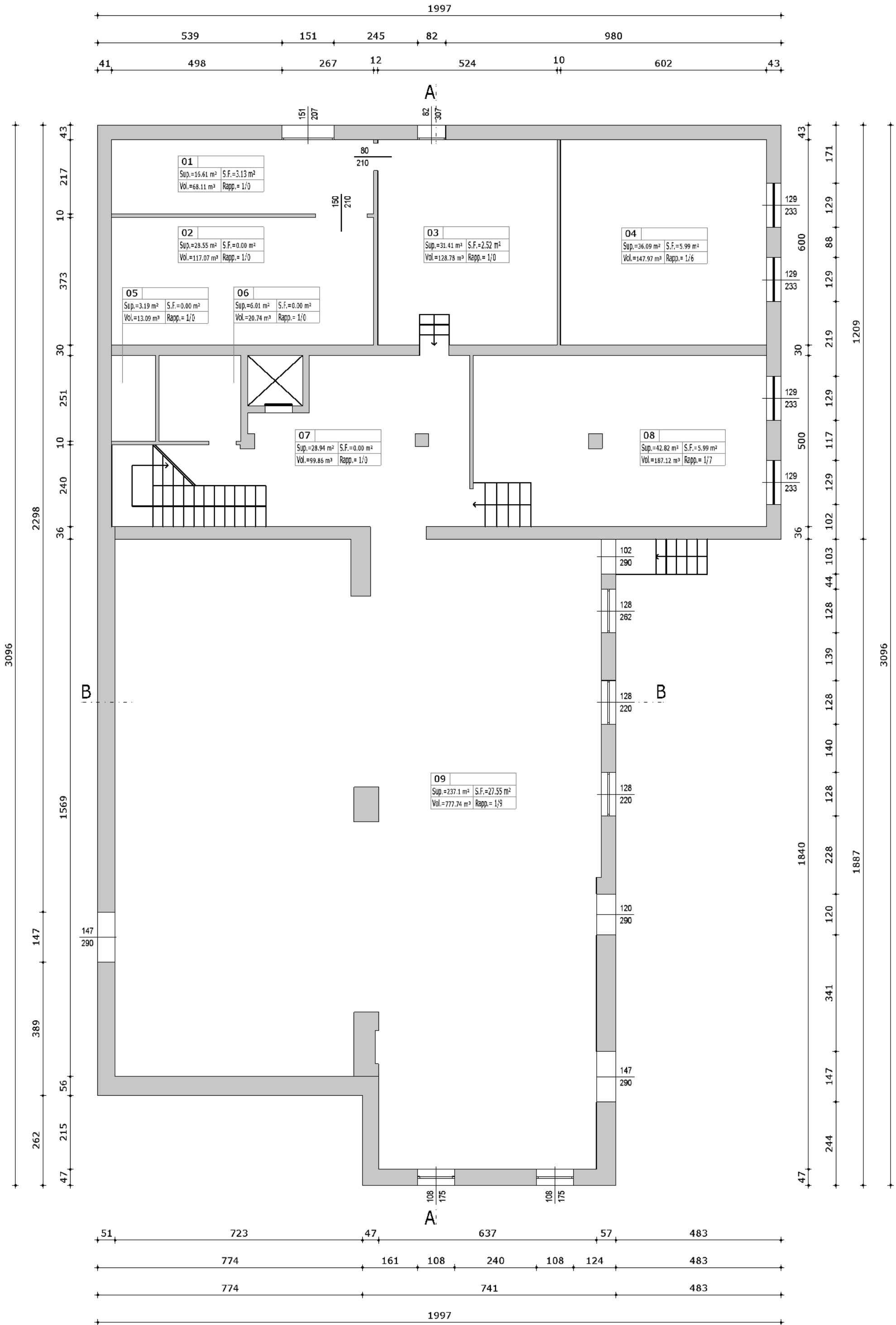
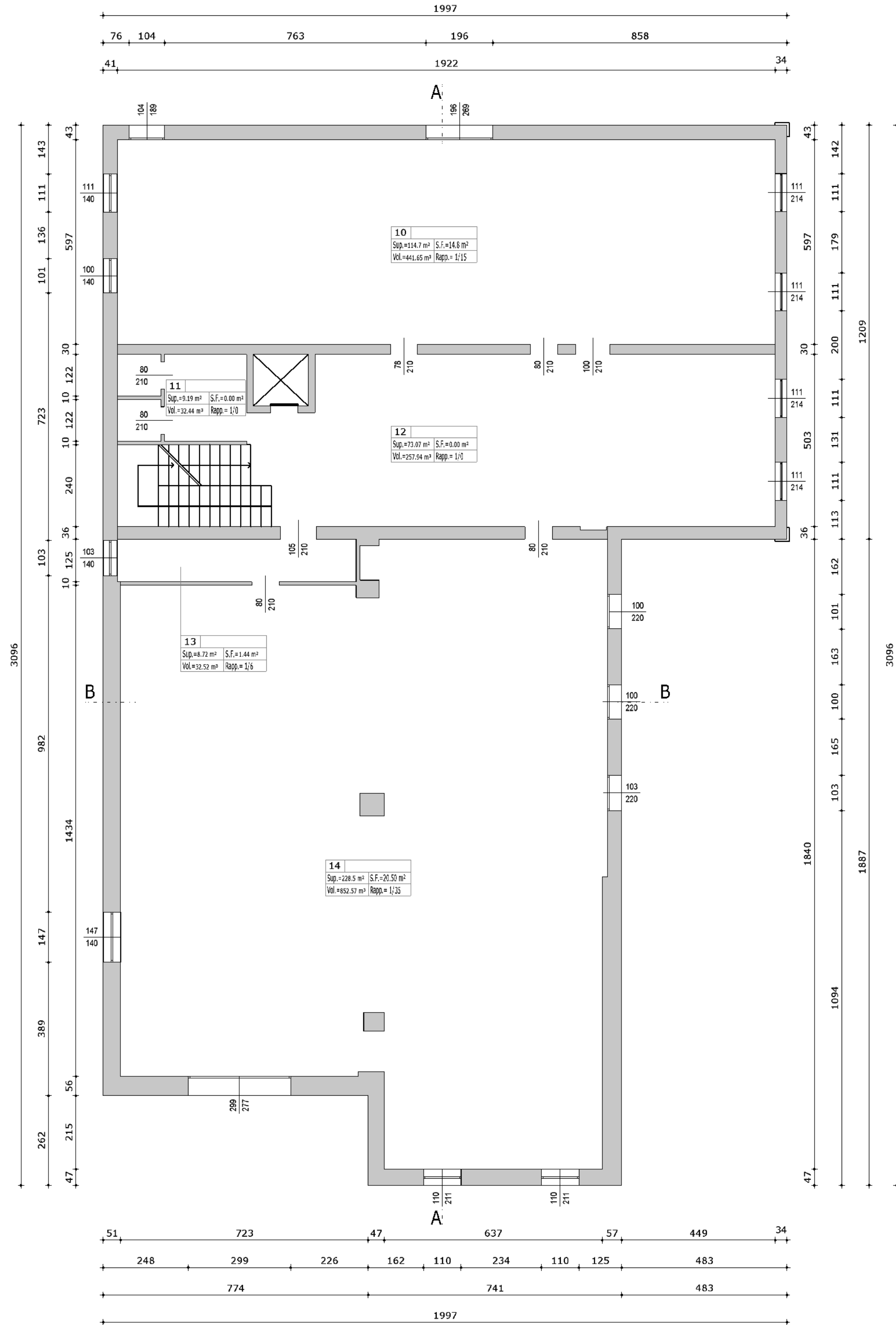


Comune di:  
**Calliera Veneta**  
Comune di:  
**PIA Montebelluna**  
Edificio da ristrutturare Sef.  
Pianta, prospetti, sezioni,  
dati volumetrici  
Scala:  
**1:100**  
Collaboro di:  
**TOS**  
Comunicazione:  
**CNG srl**  
Data di emissione:  
**gennaio 2019**  
Operatore:  
**VM**  
Data:  
**AUTORIZZATO**  
Rita Turpinetti

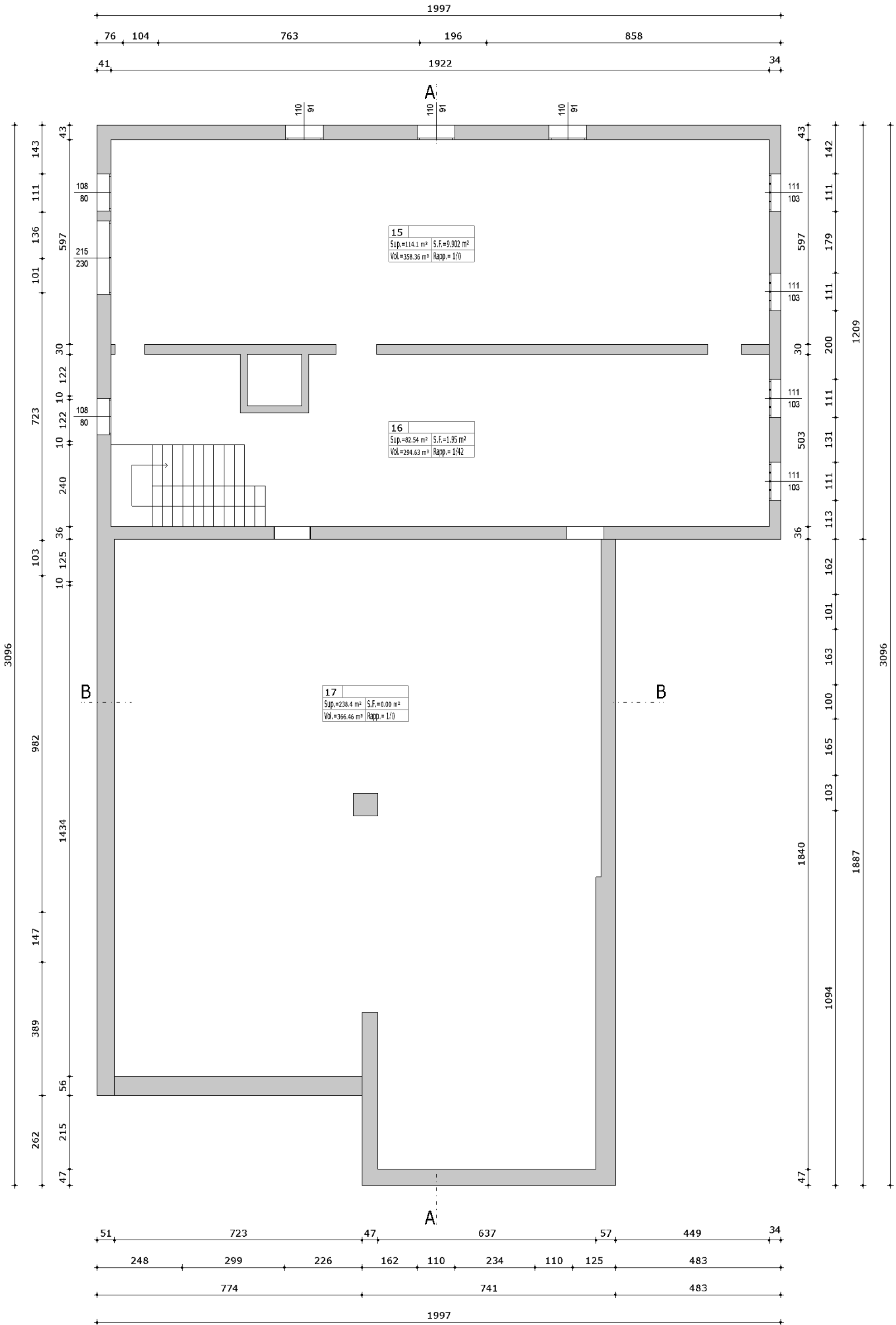
ARCHITETTO SIMONE CASTELLANELLO  
Corteo, 10 - 31044 Montebelluna (TV) - Tel. 0422/450111 - Fax 0422/450112  
E-MAIL: info@studioenedue.com - P. IVA: 04543420239



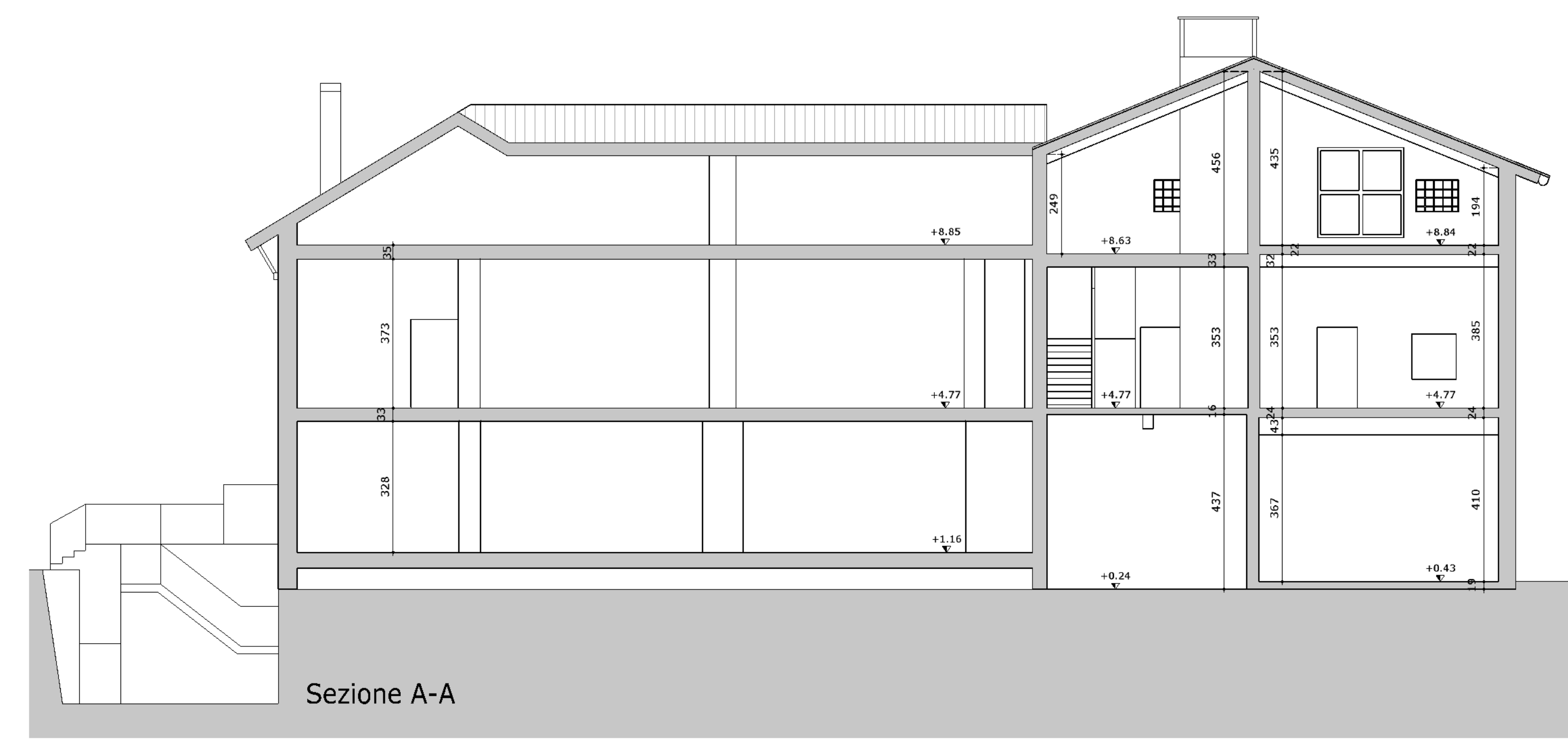
piano terra



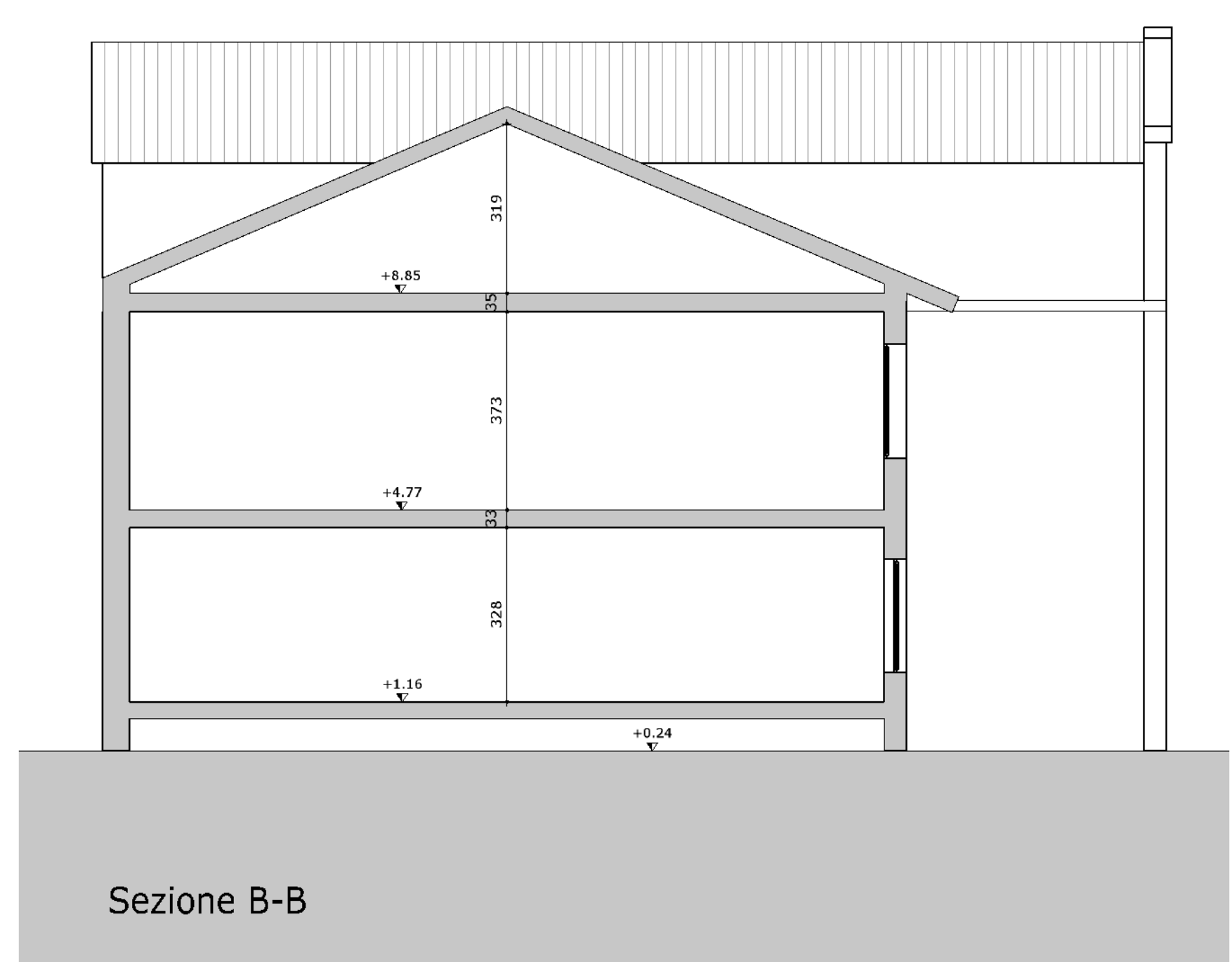
piano primo



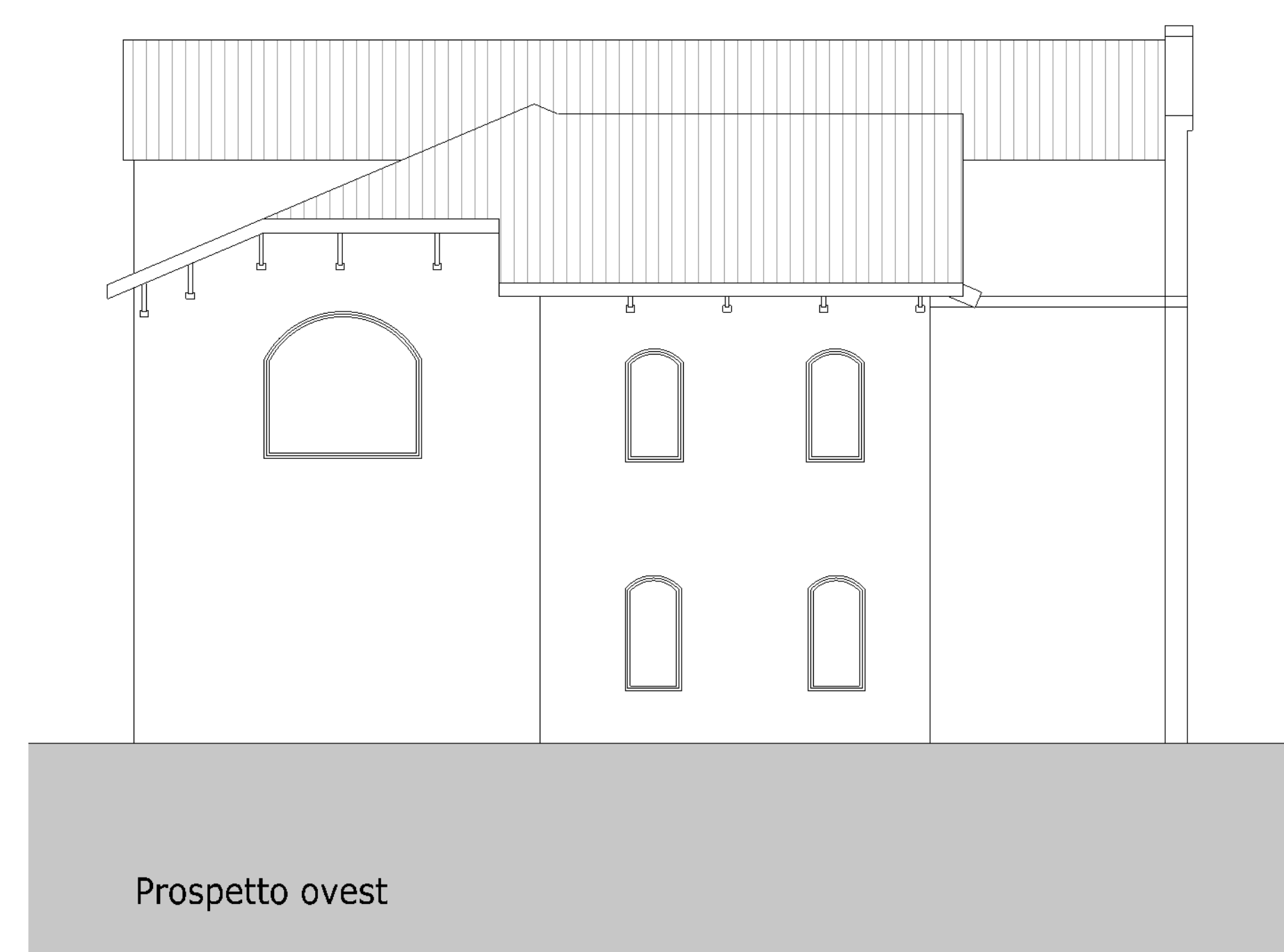
piano secondo



Sezione A-A



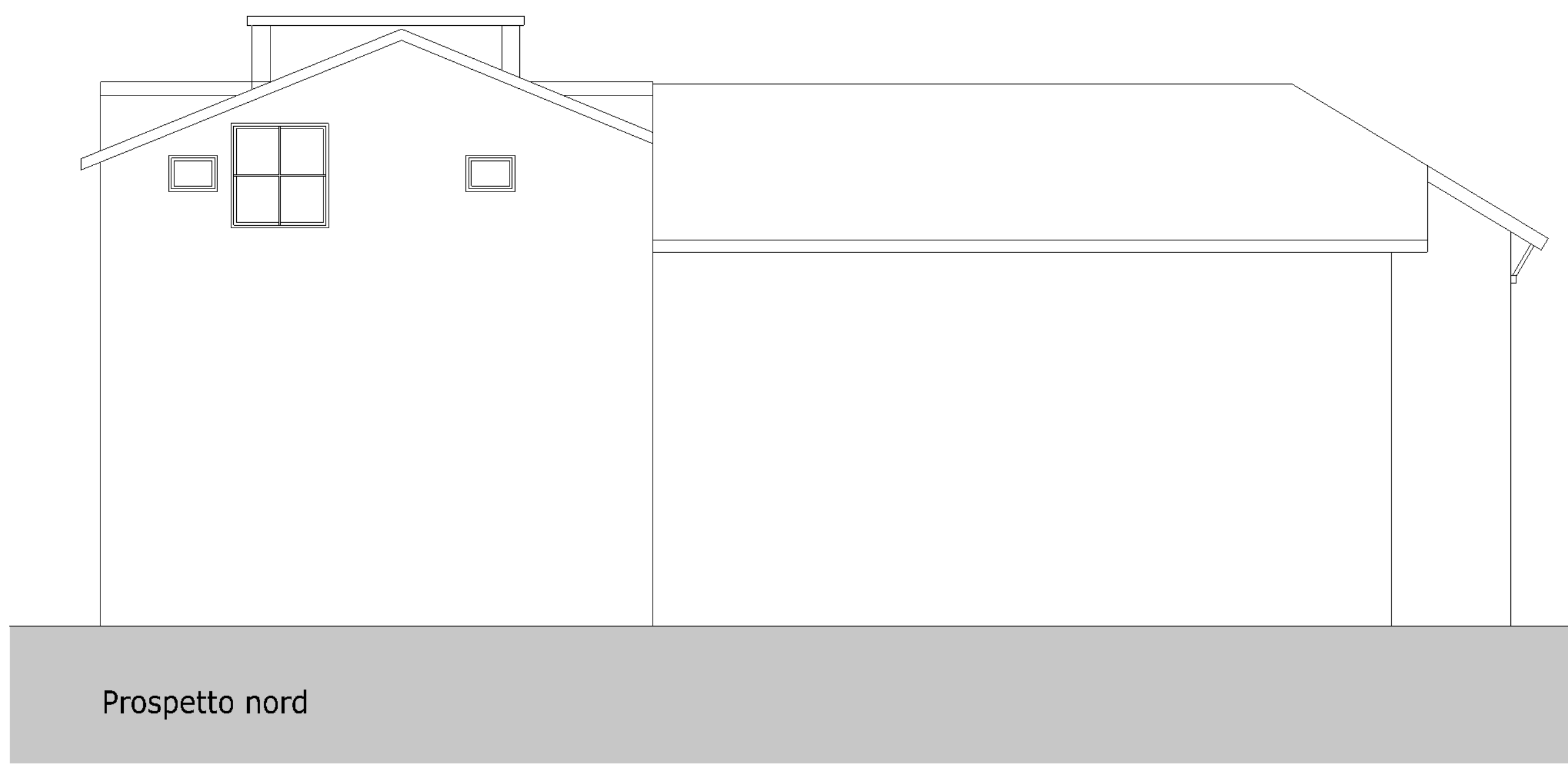
Sezione B-B



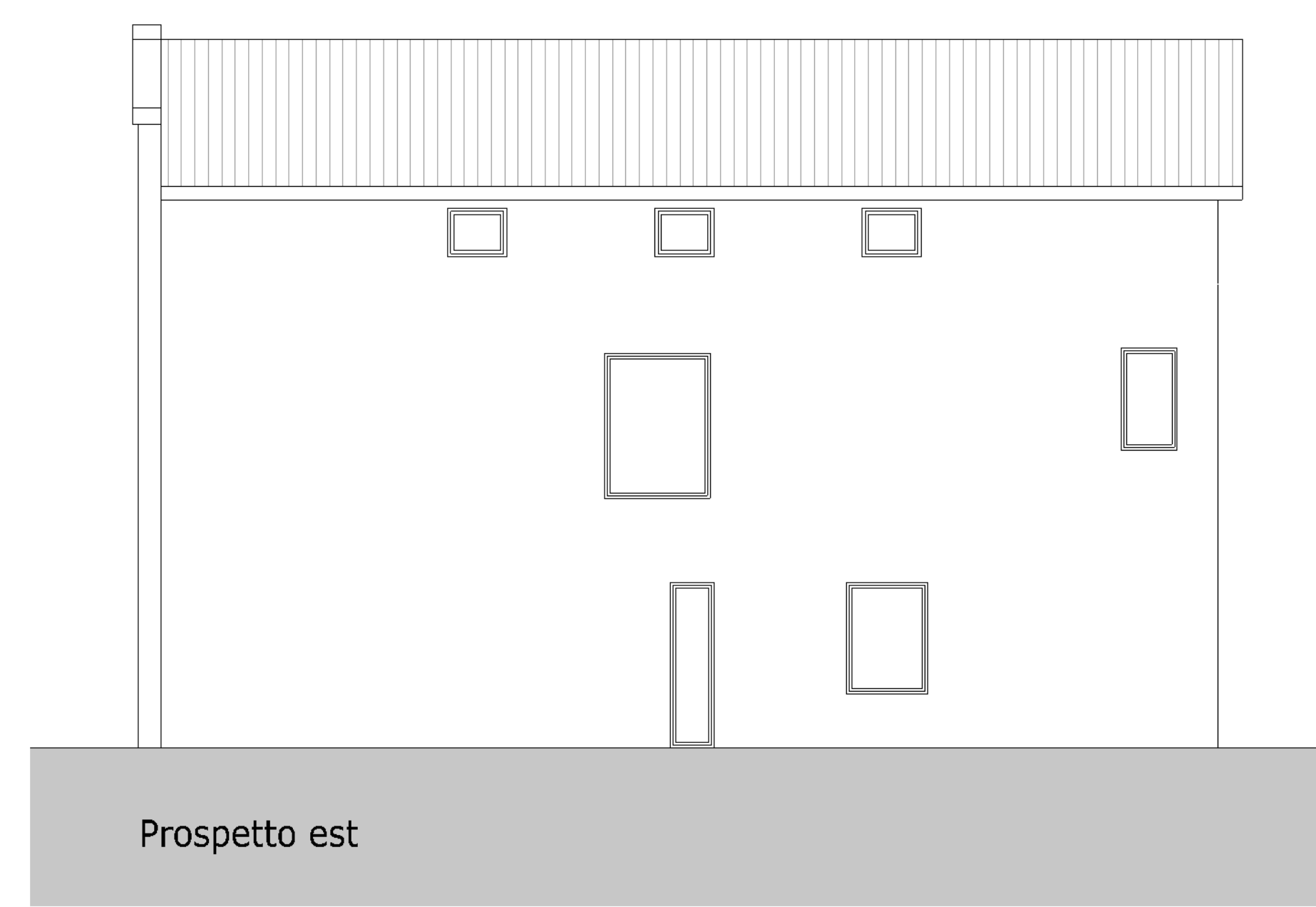
Prospetto ovest



Prospetto sud



Prospetto nord



Prospetto est

calcolo volume art. 110 R.E.

n°	funzione	h m	utile m <sup>2</sup>	superficie logge m <sup>2</sup>	portici m <sup>2</sup>	utile m <sup>3</sup>	volume logge m <sup>3</sup>	portici m <sup>3</sup>
01		4.10	28.91	...	...	66.11	...	...
02		4.10	28.90	...	...	117.07	...	...
03		4.10	31.43	...	...	129.78	...	...
04		4.10	28.00	...	...	143.97	...	...
05		4.10	3.19	...	...	13.09	...	...
06		2.40	6.00	...	...	26.34	...	...
07		2.43	24.94	...	...	60.66	...	...
08		4.37	22.82	...	...	100.12	...	...
09		3.26	329.1	...	...	777.94	...	...
10		3.40	114.7	...	...	444.45	...	...
11		3.30	3.19	...	...	36.44	...	...
12		3.33	23.97	...	...	237.34	...	...
13		2.20	8.97	...	...	38.50	...	...
14		2.73	228.5	...	...	632.57	...	...
15		3.14	114.1	...	...	364.26	...	...
16		3.32	28.26	...	...	294.82	...	...
17		1.94	138.4	...	...	269.46	...	...
TOTALE			1439.94	...	...	4197.65	...	...